

7.12 The Vertices to Points Menu Command

VERTICES TO POINTS MENU COMMAND

The *Vertices to Points* menu command enables the user to create point features at the vertices comprising polyline or polygon features. The point features which are created by this command are stored in the current active layer. Additionally, the user is able to transfer attributes from the polyline/polygon layer to the point layer.

The operation of this command requires that the user activates in the Table of Contents the polyline or polygon layer to be processed. Only one layer can be active in the Table of Contents. The command will then process the selected features in the active layer. If no features are selected then all features in the layer will be processed. As a feature is processed, the command extracts the vertices comprising the feature and creates point features for each vertex.

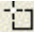
To use this command the user should:

- **1** Scroll down in **table of contents area**, and **click** at the label of the layer to be processed.

The next step is optional. If it is desired to operate on only selected features, the user should continue with the next step, otherwise the user should skip the next step to operate on all features of the selected layer.



Figure 7-12a
Vertices to Points Dialog Box

- **2** Select with the  *Select Features from Active Layers* tool the **features** to be processed.

- **3** Scroll down in the {CEDRA-Attributes-Tools} menu combo box, and select the [Vertices to Points] menu command (see Figure 7-1). If the prerequisites for the command are not met, one of the error messages shown in Figures 7-12a and 7-12b will be displayed. At this point, click the OK button and make the appropriate modification(s). Once this is done re-select the command.

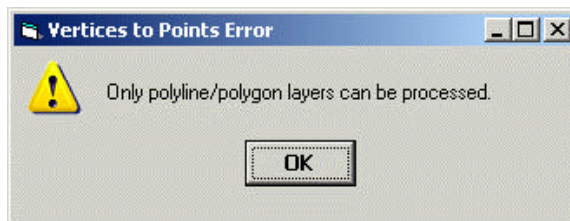


Figure 7-12b
Vertices to Points Dialog Box

- 4 If the prerequisites are satisfied and there are no selected features in the current active layer the query shown in Figure 7-12c will be displayed. If there are selected features proceed to the next step. In the case of selected features, **select** the **Yes** button to continue processing or the **No** button to abort the command.

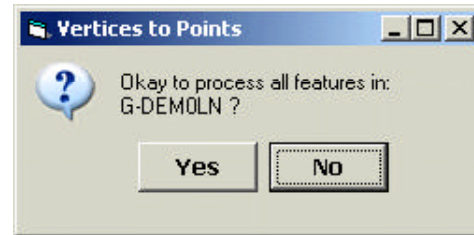


Figure 7-12c
Vertices to Points Dialog Box

- 5 From the attribute list displayed in Figure 12d, **select** the attribute(s), if any, that are to be transferred to the point features. If no attributes are to be transferred the <none> option should be selected. If the layer that is to contain the points do not contain the attribute selected in the choice list dialog box, the command will create the attribute for the user using the same specifications for the attribute as it appears in the polyline/polygon layer.

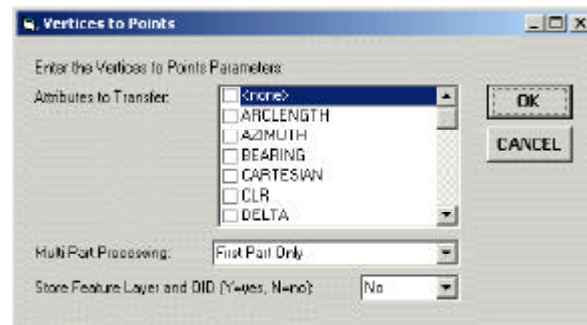


Figure 7-12d
Vertices to Points Dialog Box

- 6 **Scroll** down in the *Multi-Part Processing:* data field, and select the:
- **First Part Only** option to indicate that only the first part in a multi-part feature is to be processed,
 - or the
 - **All Parts** option to indicate that all parts of a multi-part feature are to be processed.
- 7 **Scroll** down in the *Store Feature Layer and OID (Y=yes, N=no):* data field, and **select** the:
- **Yes** option to store in the destination layer (a) the name of the layer and the OID of the feature in the source layer, which satisfies the spatial relationship, and the distance between the two features.
 - **No** option to not do the above.

- ▶ **8** Click at the **OK** button to execute the command,
 or
 click at the **Cancel** button to abort the command.

Upon completion of the processing, a message in the status bar area will be displayed indicating the results of the processing. If the results are not what the user desires, the {Edit} [Undo] command can be selected to delete the newly created point features.